



GARDEN DELIGHTS

Issaquah Garden Club

"There are times when I cannot believe I am separate from this earth, when I could swear the wind blows through me as it does the woven needles of the pine tree by the creek, when I feel my feet planted deep in the earth with the roots of trees and wildflowers, drawing essence."

Cathy Johnson, artist and writer

JANUARY MEETING

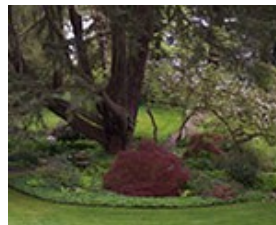
WEDNESDAY, JANUARY 11, 2012

Following a brief business meeting, Janet Wall will present our Garden/Design Sharing, speaking on "Invasives in Your Garden."

Our program this month will be presented by Stephanie Walsh, Executive Director of Lakewold Gardens. The subject will be "**Lakewold Gardens: A Look Back as We Move Forward.**" Lakewold Gardens strives to serve as a premiere Northwest garden experience. Their mission is "to preserve and enhance Lakewold Gardens as a historic estate garden of world class distinction, offering each visitor an inspirational experience through growth and learning in a profoundly unique setting."



Tom Gillies Fern Garden



Mary Jane Allen Shade Garden



Knot Garden

After our program, we'll enjoy a luncheon provided by hostess Laura Walker, and members who have signed up to provide dishes: Bernadette Anne, Joan Fields, Joan Harris, Michele Peltonen, Janet Wall, Shadi Wang, and June Willard.

Please remember to bring your own cup, napkin, plate and utensils to our meeting! **And please remember your contribution for the Issaquah Food Bank.** (In December, we collected only 33 pounds of food, probably due to the facts that there were many opportunities for giving for Christmas and that there were only twenty members in attendance at the meeting.)

PRESIDENT'S MESSAGE

Can it be January and a new year, already? December seems a blur to me, partially because of the nasty, rotten, miserable bug I came down with the day after our last meeting.

I do remember the excellent program that Michele Seth-Bristow and Kristen Pearson-Franks from Squak Mountain Nursery presented on decorating for the holidays. And I do remember the delicious lunch we enjoyed.

My thanks goes to all of you for your support and participation in Garden Club activities during the first half of this Garden Club year. I look forward to our working together during 2012 to make our club and its projects even better.

Cate Mueller

PLANT THERAPY WORKSHOP

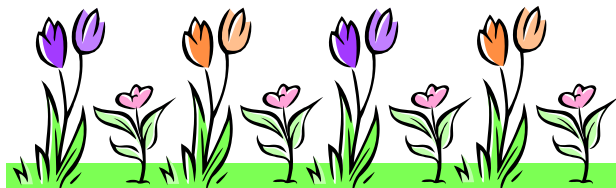
On December 22, several members of the Issaquah Garden Club met at the Issaquah Nursing and Rehabilitation Center to complete seventeen arrangements for the residents during the holiday season. Members who helped that morning included Audrey Ellingsen, Joan Harris, Joann Morgan, Dianne Tanner, Shadi Wang, Sylvia Watson, June Willard, and Sandy Young.



Ladies at work...



There will be a clipboard with a sign-up form for the February workshop available at our January meeting. Please consider participation on February 13 in creating the Valentine arrangements.



NEWSLETTER BITS AND PIECES

June Willard has suggested getting stories from our designers about when they started making flower arrangements or gardeners when they grew their first vegetable and/or flower garden...their own experiences over the years: "I recently came across the book I used at WSU and decided to jot down my flower arranging history. Might be an incentive for other members' stories of when they started life-changing projects/classes. It's surprising how early we can go back! All tied to Garden Club!

For many years now, I've been asked when/where I started flower arranging. I normally say "in Garden Club." But, it was actually in 1962-63 while attending WSU, just to find out what college was all about...my soon-to-be husband Bill (June of 1963) would graduate in 1964. I decided I wanted to have fun learning, too, so took art, tennis (had lettered at Issaquah High School) and was on the WSU team when it travelled to California; bowling (had been on IHS and two women's' bowling teams) and square dancing (IHS travelling competitive team). All were fun courses at WSU and didn't require a lot of work! I was very excited to read about and sign up for a college **flower arranging course**, especially to have fresh flowers every week in my dorm room! The course ended on Mother's Day 1963 with a big flower show...one of these days I'll come across my album and relive those days!

I invited my mother to visit me...she rode over with an Issaquah classmate's mother to attend the flower show and festivities of Mothers' Day. She was surprised (as was I) when she received a corsage for being the mother of the top designer...it was a big surprise to me, too, to receive the top blue ribbon! I spent a lot of years making small de-

signs for my mother and grandmother: they enjoyed their bouquets! After I retired from working in 1980, neighbor June Ann Hassebroek asked if I wanted to join a garden club. She started 2 clubs while working at the Samena Club in Lake Hills. So, I joined Samena Sunrise Garden Club...and the rest is history! It's been a fun ride!

June Nissley Willard

SAY IT WITH FLOWERS

Almost any place you look, you can find advice on how to garden. It is on the radio, TV, newspaper, magazines, nurseries, colleges and plant societies. People certainly don't need to join a garden club to learn how to garden. So, what does garden club have besides friendship that would attract new members?

Art affects everyone. Learning to express your feelings through an art form is one of life's greatest joys. Anyone can learn the art of flower arranging. The only place that teaches Interpretive Floral Art is in our garden clubs and somewhat in Ikabana.

We have the key to something very precious and it seems we should be out looking for the souls that want to learn artistic expression. Flowers and plant materials bring life to art that no other art form has.

Instead of looking for new members at nurseries, we might want to try going where the artists are. Invite potters, painters and crafts people to try their luck at telling a story and expressing feelings by learning the colors, textures, lines, forms and expressions that plants can make when artistically combined. Learning the Principles of Design taught in garden club would help anyone appreciate the beauty surrounding them. Invite an artist to our meetings and our shows.

ELWD AND WSFGC HAPPENINGS

February 27th, Monday - ELWD General Membership Meeting

The General Membership Meeting will begin at 9:30 AM at St. Andrew's Lutheran Church, 2650 148th Ave SE in Bellevue (near the Mormon Temple). The meeting will include a design program by Jon Throne, noted design artist and teacher from Countryside Floral and Garden, and a horticulture program presented by Susie Egan, the owner of Cottage Lake Gardens in Woodinville, WA. The topic is *Spring Ephemerals*,

March 12, Monday - GALA XXXIV: "Come Make Memories with Frank"

The Gala, held at the Holiday Inn in Everett, will feature a program by Washington state artist, Frank Arcuri, who has created floral arrangements for over fifty years. His arrangements can be seen around Everett as well as at Stadium Flowers' Broadway location.

Tickets for the noon luncheon and the design programs are \$35. Proceeds go to support WSFGC Headquarters House (also known as the Garden House). See the Winter Issue of Smoke Signals for more information.

ISSAQUAH HISTORY MUSEUM PRESS RELEASE

MUSEUMS REVIEW THE ARTIFACTS OF 2011 Issaquah, WA. Each year the Issaquah History Museums accept hundreds of photographs and artifacts into our collection. In 2011, more than 40 donors brought us artifacts and photographs that help tell the story of Issaquah. Artifacts come in all shapes and sizes, and a range of ages.

The oldest item among our 2011 accessions is Thomas Jefferson Cherry's violin. Cherry came to the Issaquah valley in the 1860s. He was one of the valley's earliest settlers, and close friends with James Bush and his family. Cherry had no children to inherit the violin when he died in 1899. The violin passed down through members

of the Bush family until it reached Garry Anderson, who donated it to the Museums. Cherry and his violin were probably the small farming community's only musical entertainment at that time.

The Issaquah History Museums also received a donation that was part of the first St. Joseph's Catholic Church. The church was constructed in 1896 on Mill Street (today's Sunset Way). In 1964, construction of a new church began on Mountain View Boulevard, and mass was first held there on March 7, 1965. In the meantime, the existing church building had fallen into disrepair. Parishioners recall that grass was growing up through the floorboards of the old church. The original church's high altar, carefully stored by Bill and Eleanor Somsak for nearly 50 years, was donated on their behalf by their son, Jeff Somsak. The high altar will be on exhibit at the Issaquah Depot starting in February 2012.

Finally, the Issaquah History Museums received a circa 1960 service club sign once posted on Highway 10 (today's Gilman Boulevard) near the site of Gilman Village. The sign listed all the active service clubs in Issaquah, and their meeting days and times. Many groups on the list (such as the Kiwanis Club) are still active today; others (like Issaquah's Junior Chamber) have fallen by the wayside. The sign was salvaged and cleaned up by Ryan Heidy of the Issaquah Coffee Company, then donated to the Issaquah History Museums. The sign is on long-term loan to the Issaquah Coffee Company (317 N. Gilman Boulevard #46, in Gilman Village), and is prominently displayed near the front counter.

Other artifacts of note for 2011 include an official City of Issaquah Public Works patch from the 1980s; a coal car wheel found in Issaquah Creek by hatchery employees (most likely eroded out of the hillside above, once the site of a major coal-mining enterprise); a sign once posted at the Issaquah Skyport landing field (near today's Costco), which informed flyers of the \$3 landing fee; and promotional materials from the 2011 opening of Swedish Hospital at the Issaquah Highlands.

For more information about the Issaquah History Museums or any of these artifacts, contact Erica Maniez at the Gilman Town Hall Museum, phone: (425) 392-3500, e-mail: info@issaquahhistory.

If you haven't seen it, there is an incredibly beautiful video on YouTube, The Beauty of Pollination: www.youtube.com/v/xHkq1edcbk4?version=3%20%20%20%20



The 2012 Northwest Flower and Garden Show: "A Floral Symphony" is coming
February 8-12, 2012 to the Washington State Convention Center

The show features twenty-five design gardens, including one designed by votes of website readers, as well as the marketplace with over 300 contributors, a "Gate Show" of twenty unique gates by local artists, a container show, floral competition, and a play-garden based on "Charlotte's Web."

Tickets are now available at The Grange Supply, local nurseries and on-line.

Prices: Early Bird \$16.00 (must be purchased by February 7, 2012, to receive discount); **Adult ticket: \$20.00**

Youth (13 to 17 years) \$5.00

Group Tickets (20 or more) \$15.00

Two day pass: \$29; Five-day pass: \$65.

Well-known floral designer, **Lana Finegold**, is presenting a class, "Creating Harmony; Using outdoor Foliage for Indoor Designs, on Wednesday, February 8 (which just happens to be our next meeting date).

[This recipe was printed in the newsletter of the Falls Church Garden Club, in November, 2010. I thought IGC members might enjoy it.]

Potage Saint-Germain

1 pound dried green split peas (2 ½ cups)
 10 cups water
 1/2 cup chopped onions
 1/2 cup chopped celery
 1/2 cup chopped carrots

1/2 cup chopped leeks
 1 bay leaf
 1 ham bone
 Salt
 Freshly ground pepper
 1 tablespoon flour (optional)
 1 tablespoon butter (optional)
 1/4 cup minced parsley

Wash the peas under running cold water and pick out any foreign particles. Place the peas in a large soup kettle, add the water and cover. Soak the peas overnight.

Add the celery, carrots, onions, leeks, bay leaf and ham bone.

Bring to the boiling point and turn the heat to low. Skim any foam from the top of the soup. Cover and simmer for 1 ½ to 2 hours. Or until the peas are falling apart or the meat separates from the ham bone. Skim frequently as necessary.

Remove from heat and take out the ham bone. Cut any meat off the bone. Shred and reserve it. Discard the ham bone and bay leaf. Strain the soup through a sieve or purée in a food processor or blender. Return soup to kettle and heat through. Check the seasoning; if necessary, add salt and pepper to taste. If the soup is too thin for your liking, knead the flour and butter; drop in pea-sized pieces into the soup, stirring constantly until well absorbed. Cook over medium heat for three more minutes or until very hot. Add parsley just before serving. Serves 6 to 8

The Russian Tea Room Cookbook,
 Faith Stewart-Gordon & Nika Hazelton
 Moyer Bell Limited, 1992, pp. 60 –61.



HELLEBORE TEA

On Sunday, **March 11**, the Late Bloomers Garden Club will sponsor the 9th annual Hellebore Tea, their fundraiser for the Lake Wilderness Arboretum., from 2 to 4 PM, but tables must be ret up and ready to go by **1:40 PM**. Issaquah Garden Club has received tickets for two tables seating ten each at the Tea. To date, members have signed up for fourteen of the twenty places available. **The tickets will be sold at our January meeting.** Your President will appreciate it if you could give her \$15 cash for each ticket; however, she'll accept checks, made out to "**Catherine V. Mueller,**" especially if you're buying multiple tickets. (She'll then arrange to have one cashier's check for the full amount sent to Late Bloomers Garden Club .)

Specific information about the tea will be available at the meeting or may be Emailed on request. To summarize, in addition to table linen, centerpiece and other decoration, each table is responsible for providing six dozen individual food items (half to be shared with other tables), a teapot, coffee pot, sugar and creamer set, serving plates or dishes for food items, and a place setting for each guest to include a dessert or salad plate, a cup and saucer, silverware and napkin. Additional optional items include place mats, place cards, party favors, and small baskets for new and used tea bags.

There will be a garden hat contest and a table setting contest—so wear your garden hats! Marianne Binetti will again be our judge. To raise additional funds, there will also be a plant sale, a raffle, and a silent auction.

GARDEN DELIGHTS

c/o Cate Mueller, Editor
24205 SE Tiger Mtn Rd
Issaquah, WA 98027-7336

www.IssaquahGardenClub.org

This month: Lakewold Gardens

