



GARDEN DELIGHTS

Issaquah Garden Club

“Let no one think that real gardening is a bucolic and meditative occupation. It is an insatiable passion, like everything else to which a man gives his heart.”

Karel Capek, 1890-1938, garden writer

May Meeting

May 10, 2013

There is a link between our speaker this month, horticulturist and plantsman Rizanino “Riz” Reyes and our presenter in March, Karen Chapman. If you’ve purchased or just looked at her new book, “Fine Foliage,” you may have seen that several of his container designs and installations were photographed and included in the book.

Riz is “The Next Generation Gardener,” following in the tradition of Dan Hinckley. He has gone on many expeditions to Asia and other areas, identifying and collecting new cultivars which he has propagated at his nursery in Shoreline, Landwave Gardens. As a fairly young man, he has a vast store of experience and knowledge that he freely shares in delightful programs.

Riz had fabulous success at the 2013 Northwest Flower and Garden Show with “The Lost Gardener” exhibit, which he calls one of the highlights of his entire career. Not only did he and his team earn a Gold Medal, he also won the First Annual Golden Palette Award for the best use of color, plant material and forced blooms, the Environmental Award from the American Horticultural Society. He also won the prestigious Founder’s Cup for the Best Show Garden. He says that what he was aiming for was “a wild jungle with rare and unusual species of plants represented that transitioned into a more confined and rigid environment.”

Riz has some fascinating topics on his blog site: <http://extgenerationgardener.blogspot.com/> --including a good video about dividing dahlias.

We’ll also enjoy a design vignette shared by Sally Cadranell.

Please try to arrive at 9:45 for our meeting, so we’ll have ample time to greet our returning President, chat and grab a quick cup of coffee or tea.

Don’t forget your contribution for the Food Bank! Last month, members contributed forty pounds of food.

PRESIDENT'S MESSAGE

*All of you are cordially invited
to the following:*

NATIONAL GARDEN CLUB NOTES

Across our nation and with NGC Affiliates abroad, the week of June 2-8 is **NATIONAL GARDEN WEEK**. Think of a way to celebrate....invite someone to tour a garden or do a planting together.

Check out the National Garden Club photo archiving. Look at: **Flickr.com/NationalGardenClubs**. This site is filled with some 3,500 pictures. All states are represented. We can all be proud to be part of an organization with so many posted accomplishments. Our NGC members make great contributions.

The deadline for attending the **National 84th Convention** being held at the Seattle Sheridan hotel was April 19. However, for just a tiny higher rate, you can still attend. Many IGC members will be there to help you get the most out of the event. Several of our IGC members are proud to be helping create 60 centerpiece designs for the Saturday lunch.

The excitement and quality of a National Convention in Atlanta, GA was one of the first events I attended when I joined an ELWD garden club. The awe I felt hearing these top notch programs and "over the top beauty" of displays from about 45 years ago thrills me to this day!

National Convention may not be in our area for another 25 years so don't miss it. Registration form for the convention are

at: www.gardenclub.org. One of our members (Karen Lee) is looking for a roommate for Saturday night.

June Ann Hassebroek

ELWD and WSFGC DATES

May 6 – 9:30 AM Arbor Day Sammamish Highlands Commons tree planting followed by **Board Meeting**

May 20 – 9:30 ELW District Meeting – two great horticulture programs. Sign up at IGC May meeting or contact ELWD Reservations. Once you make a reservation, you will be asked to pay unless you cancel well in advance. IGC will create a dozen centerpieces for this event using historical Past District Director Award Trophies.

June 10-13 – WSFGC - State Convention "Around The Sound" Go to WSFGC web site: www.Wagardenclubs.com to register or read the WSFGC magazine Smoke Signals, spring issue, pages 8-11.

IGC OFFICERS FOR 2013-2014

The slate of officers presented for election at the April meeting was approved unanimously:

President: June Ann Hassebroek
Co-Vice President: Lenda Sundene
Treasurer: Shadi Wang
Secretary: Jean Pass

CLUB DUES, 2013-2014

Please remember to bring your checks, for \$25 payable to "Issaquah Garden Club" to the May meeting to give to our Treasurer, Shadi Wang. We must pay our dues to district by July 1, 2013.

If you cannot attend the meeting May 8, please mail your check to Shadi Wang at 16711 254th Ave SE, Issaquah, WA 98027-5204 just as soon as possible. Because the subscription rate for Smoke Signals is increasing, we wish to maintain the current price for 100% clubs. We need all members to pay their dues in a timely manner to retain the current rate as well as to subsidize Issaquah Garden Club, our district and state organizations, and our National Garden Club.

Also, Membership Chairman, Karen Bukantz passed out a form "Let's Get Acquainted" at the April meeting. Each member, long time or brand new, is asked to complete this form. This will help direct the future programs and educational opportunities. If you mail your dues, you can mail this form with your check to our Treasurer.

Please double check the Yearbook for the accuracy of your name, address, telephone, cell phone and email. If you want a change, give that information in writing to Shadi as well.



ANNUAL PLANT SALE

Please keep in mind that our annual Plant Sale will be held on **Saturday, May 18th**, at Joann and Ken Morgan's home.

At the potting party held on April 18, fourteen people helped to pot, label and move a large variety of plants to the Mueller driveway. On April 25, additional plants, donated by Janel Garnett, were dug, potted and transported to Issaquah for the sale. If you haven't yet donated plants for the sale, you are welcome to drop off potted plant donations to the Mueller driveway before **May 14**, the date of the final pricing and potting party at the Muellers. There will be sign-up sheets at our meeting May 8 for both the pricing party and the sale day the next week. We cannot have a successful sale without active member participation in this project. We need your plants, and we need your presence on May 18 to help with the sale.

MOTHER'S DAY ARRANGEMENTS, MAY 10

Members will meet at Issaquah Nursing and Rehabilitation Center at 9:30 AM on May 10 to create arrangements in honor of Mother's Day for the Center. This is a new occasion for our club to contribute arrangements for the center. A sign-up sheet will be available at our May 8 meeting.

BAKE AND CRAFT SALE MAY 18

In addition to our annual Plant Sale at the Morgans' on May 18, Lenda Sundene has organized a bake sale for that day. She has already lined up members who will bring baked goods donated for the sale. Additionally, Joann Morgan will be selling her paintings. It was decided at the Officer and chairmen meeting, April 17, that other members would be given the opportunity to sell their art and crafts on that day. Those wishing to do so must bring their items and card-table and sell their items themselves.

ANOTHER EVENT

April 28-May 4: Celebrate Native Plant Appreciation Week — for tours and events, go to www.wnps.org "What's New."

OTHER PLANT SALES

May 4 and 5: the annual Master Gardener Plant Sale at The Center for Urban Horticulture. Open 8 AM to 5 PM on Saturday; 10 AM to 3 PM on Sunday. This big sale is the mainstay of funding for the King County Master Gardeners.

May 11, 10-4: WNPS Native Plant Sale - Mercedale Park, 77th Ave & 32nd St, Mercer Island. Over one hundred species of wonderful native plants will be for sale.

Pine Lake Garden Club is also holding a plant sale, **Saturday, May 11**, from 9 AM to 2:30 PM at the parking lot of Sammamish Presbyterian Church, 22522 NE Inglewood Hill Road. For more information, please call Marianne Wilkins at 206 799-9177. Pine Lake Garden Club has graciously offered us whatever doesn't sell at their sale.

GARDENING IN MAY

Water outlets need to be convenient and close to your garden. Lacking a nearby water spigot, use a hose-end turn off valve, or better yet, an attachment with two valves for two hoses.

Some medicines—certain antibiotics and anti-depressants, and some thyroid medications—cause increased sun sensitivity. Try to work in the garden when temperatures are cooler. Incorporate shady areas into your garden for sun protection and take breaks from gardening. Also be sure to drink plenty of water to avoid dehydration.

When placing your indoor plants outdoors during the summer, clay pots can be set directly in the ground so the soil is one or two inches below the pot rim, allowing moisture to go through the porous clay. If your plants are in plastic or glazed containers, repot them into clay containers or check frequently for water because moisture will not move through the plastic.

Prune rhododendrons immediately after flowering. Old clusters should be snapped off when partly dry, but remove with care in order not to decrease or prevent bloom next year.

Record-keeping is an important way to determine the plants that performed well in your garden this year and the ones that did not. Record planting dates and bloom times, duration of blooming, location of bulbs, and which ones need dividing in the fall. This way, when you begin to plan your garden for next year, you will have the information from previous years. Records will make your planning much easier and enjoyable and will help to ensure that you use the correct plants to get the perfect look for your garden.



IKEBANA EXHIBIT

On May 18 and 19, the Ikebana International—Seattle Chapter will hold an Annual Exhibition of Ikebana at Seattle Asian Art Museum, Volunteer Park, 1400 East Prospect Street, in Seattle. The time Saturday is 10 AM to 5 PM, and Sunday 10 AM to 4 PM.

This chapter was chartered in 1959, the 19th chapter of the Tokyo-based organization. Membership is open to all persons interested in the art of Ikebana, the related arts of Japan, and the ideals of Ikebana International.

Appropriate to this event, June Ann has written the following:

Oriental floral art is referred to as **Ikebana**. The beauty and simplicity has greatly influenced American Flower Arrangement. The principles help to train your eye to recognize design potential in plants and to improve your skill in developing their best features. The character of a people is reflected in its art. Its character reveals attitudes toward life. Ikebana means living flowers. To the Japanese, their floral art involves their religion and their social structure. They idealize nature. Respecting natural growth forms, they improve them by pruning and bending. Through Ikebana they seek to convey the beauty of a landscape, even one lovely flower may symbolize a garden.

The practice of Ikebana goes back to sixth-century China when simple offerings of flowers were placed before Buddha. A Japanese scholar had gone to China to study, and brought back Ikebana and founded the earliest school which still stands on the original site. The present headmaster is perhaps the forty-fifth descendant of the founder.

It was originally taught in the temples by priests, and its study was the prerogative of men. For many years, nobles and warriors were the only students, through the practice of Ikebana, they sought to ease the tensions of life by shifting their thoughts from violence to peace. To this day, Ikebana is dominated by men and it is men who have organized most of some 3000 schools of Ikebana arrangement. However, women are now permitted to study as well as teach and since 1900's training in the art has become a requirement for women prior to marriage.

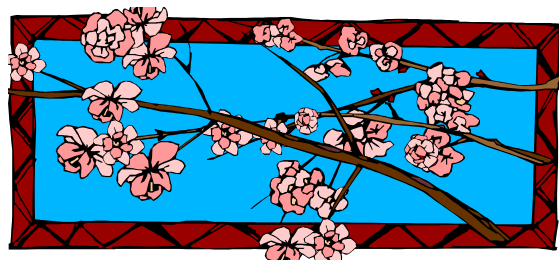
In garden club work, we borrow from the basic Ikebana idea of designing in line with nature. The design method often means composing materials as they grow and by the Western sense of balance by placing the largest flowers and leaves low and central to give visual stability at the base of the design.

In most flower arrangements, you will see traces of a triangle, both in Oriental or Western. To create a design in what is referred to as "Japanese manner" is guaranteed by the three strong heaven-man-earth lines dividing space in an open pattern.

The ratio of stem length to container; one-and-one-half times, as well as alignment of the tip of the main line over the center of an arrangement are two practices almost certain to insure proper height and stability.

The study of Ikebana styles and history are fascinating and you are encouraged to look for books to study this subject.

June Ann Hasebroek



LOGO COMPETITION

The Issaquah Garden Club is approaching its 85th year of existence and yet in all that time, there doesn't seem to have been a club logo. Wouldn't you say that "it's about time?" We believe that our club has an abundance of creative people, so we are having a contest among our club members to design a logo. For a little incentive, the winner will receive a crisp \$50 bill. Here are the details:

You may ask your friends and family to help you!

You may use *non-copyrighted* graphics or clip art.

Make it simple enough to use on business cards/yearbooks/signs.

Colors? YES!

Create something that will be easily identifiable as Issaquah...Garden...Club! Look at District and State logos for inspiration.

Multiple entries are allowed.

Your final entry must be in a digital format, however those without computers may send paper entries to: **Sandy Young, 201 Union Ave. SE #180, Renton, WA 98059.**

Submit digital entries via email to Sandy Young at sandyjv@comcast.net.

The deadline for entries is **Sunday June 30, 2013.**

A committee will be formed to review entries to determine whether to proceed with a vote, based on appropriateness of submissions.

Membership will vote—date to be determined—for their favorite via email, or by calling Sandy at 425-890-0124.

The goal is to have our logo selected and ready for use for the 2013-14 Yearbook and our upcoming 85th anniversary celebration on November 13, 2013. Put on your thinking caps and give it your best shot!

GARDEN DELIGHTS

c/o Cate Mueller, Editor
24205 SE Tiger Mtn Rd
Issaquah, WA 98027-7336

www.IssaquahGardenClub.org

**This month: "Searching for
the Best Garden Plants for
the PNW"**

