



GARDEN DELIGHTS

Issaquah Garden Club

"Celebrating our club's 85th Year..."

"Gardening is a mirror of the heart. Gardening is a way of showing that you believe in tomorrow. Gardening is an exercise in optimism. Gardening is not a rational act."

-- Margaret Atwood, Canadian novelist, poet, and environmental activist, 1939-

September Meeting

September 10, 2014, 10:00 A.M.

Our speaker for the September meeting is David Droppers, on "**Washington Butterflies.**" He is the Washington Butterfly Association Vice President; Butterfly and Wildlife Gardens and UW Biology Field Trip Leader.

Mr. Dropper writes: "Learn what plants and techniques will maximize your chances of filling your yard with butterflies. In addition, you will learn the basic biology and ecology of butterflies and what makes gardening for them in western Washington particularly challenge but unique.

"I've worked for organizations such as the Woodland Park Zoo, National Park Service and National Forest Service, among many others. I received my Bachelor's from the University of Washington in Environmental Science and am currently completing my master's degree at Western Washington University."



Please don't forget to bring your donations for the Issaquah Food Bank.

And please don't forget to bring your luncheon utensils, cup, plate and napkin to our meeting. In addition to being more ecologically prudent, this saves our club the expense of providing these products.

(The luncheon hostess and crew are listed on the next page.)

PRESIDENT'S MESSAGE

LOOKING FOR THE MAGIC

When I am asked why I'm involved in something, my standard reply is "I'm in it for the magic." This has always been true for me and my ensemble of actors, American Radio Theater. We just celebrated our tenth anniversary.

Is there magic in the Garden? Oh, yes, indeedy.

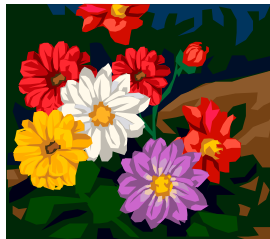
Everyone has walked out onto your back porch or patio, to discover a beautiful spider's web, outlined in morning dew, as if it were a jeweled necklace. Or the first time a flower opened itself to bask in the sunlight. There's the magic in watching and encouraging new gardeners to discover their own magic in growing plants. How about the magic in helping our community bloom, and the friendships that also blossom. There's the magic of viewing a beautifully landscaped garden, and the magic of achieving just the right touch in a floral arrangement.

Live in the moment, unfurl in the peace and sunshine in the garden.

Our first meeting is around the corner, Sept 10. There's the magic in making new friends and touching base with familiar ones. So that meeting will be magical...

See you then!

Regards, Joy Jackson



LUNCHEON CREW for September 10th

Hostess: Lenda Sundene
Crew: Peggy Abernathy, Chong Chancellor, Joan Harris, Marietta Hunziker, Joan Morgan, Jean Pass, Sherran Whatley, and June Willard



The last ArtWalk of the season will be held this Friday, September 5. Our club will again have a table in front of Opus Bank, 6 to 9 PM.

WORKDAY AT BBG NATIVE DISCOVERY GARDEN

Issaquah Garden Club members help along with other ELWD garden club people at the Bellevue Botanical Garden Native Discovery Garden.

The date for the BBG native plant rescue is **Friday, October 17, 12:30**. We will meet at the Shorts original house (the old Visitor Center) so allow time to follow the new route off to the left after entering the new front area at Bellevue Botanical Garden. We'll remove the native plants that were planted during the construction last spring and move them to a better location. These plants, all one gallon so they will move easily.

ELWD GENERAL MEETING

On Monday, September 22, our district will hold the first General Membership Meeting of the 2014-15 year. The day will begin at 9:00 A.M. at St. Andrew's Lutheran Church, Eastgate. The program will include a small standard flower show, "Looking Back," of various late summer horticulture, a horticulture program on clematis by Laura Watson, who grows over a hundred varieties, a program of seasonal designs, "Changing Colors," by Joyce Komnick of Capitol District, a short business meeting, and a luncheon prepared by **Issaquah Garden Club**. There will also be a raffle for which those who bring horticultural entries will be eligible.

The schedule for the meeting will include registration and check in for horticulture and design entries at 8:45 A.M., the horticulture program, a fifteen-minute break; business meeting; lunch; the design program, the raffle, and talking about the Flower Show until 1:30 P.M. The cost of the meeting will be \$10. The schedule for the show may be found at the ELWD website: www/elwd.org,

As a service to IGC members, reservations for the ELWD General Membership Meeting will be taken at our IGC meeting, September 10, and will be forwarded to the Registrar. If you wish, to register separately, you may email the Registrar, Joyce Voldal, javoldal@hotmail.com.

We will need to discuss preparation, plating, and serving the luncheon at this event at our IGC meeting next week. Your willingness to participate is crucial.

IGC OCTOBER MEETING

We will hold our October meeting at the newly-built Visitor Center at Bellevue Botanical Garden. We would gather under cover just to the right on entering new area. Final plans have not yet been made, but we know that the day will include a tour of the area between new entrance and over to perennial border....discussing new plantings around Education Center, rock garden, wetlands, water wise and perennial border. If thirty IGC members attend, there will be three groups each beginning in a different place.

If the weather is cold and rainy, we may have to talk under cover at the gathering place, go into learn about the fancy new plant and garden data screens and Gift Shop.

We'll bring a bag lunch and may eat in one of the meeting rooms, available after 12 noon or 12:15. Our program would also held in this room,

At our meeting next week, to facilitate planning for the docents who would guide us, we'll count those who intend to go to BBG for our October 8 meeting.



BELLEVUE BOTANICAL GARDEN

If you haven't visited BBG since the new Visitor Center opened in June, you might wish to do so while the summer blooms are still looking handsome. You'll discover how handsome the facility is, the fact that you can access restrooms without going inside, and that the Trillium Gift Shop has been expanded. You'll find that the traffic pattern in the parking area has changed. It can be a little tricky. On our visit to BBG next month, you'll learn more about the utility of the design of the Center, the intention of the designers to create a "green" building that saves water, and the function of the multiple meeting rooms within, which incorporate versatility for different uses.

ELWD (East Lake Washington District), a partner with BBG, will hold Board meetings at BBG during 2014-2015—the ELWD Arbor Day celebration will be held there, next May.

Please see the BBG website for more information about the gardens and the lectures and classes held there:

www.bellevuebotanical.org



Picture credit: :www.dazzlingplaces.com

ELWD AND WSFGC NEWS

You may still register for the **Gardening Study Course II**, presented by ELWD on September 15, 16, and 17 at Lake Washington Institute of Technology. The course includes units on New Plant Development, Lawn Alternatives, Growing Veggies, Integrated Pest Management, and Container Gardening. Information and the registration form can be found on the website:

www.elwd.org

Terra Tillers Garden Club presents a Standard Flower Show, "Garden Treasures," **Saturday, September 27, 2014 - 11:00 to 3:30 P.M.**, at Bellevue Botanical Garden's New Education Center.

The 2014 WSFGC Holiday Show, "Holiday Jewels," will be held **November 5 and 6** at the Holiday Inn, Everett, WA. Advance tickets for \$8 should be available at the ELWD General Membership meeting.

The schedules for both these shows are available at the ELWD website.

GARDENING AT ISSAQUAH HISTORICAL MUSEUM

One of our IGC members has researched the schedules for our meetings and the various projects we are doing, and has discovered that the only open time to schedule workdays on a monthly basis for the Historical Museum Garden is the **fourth Tuesday of the month.**

Please mark your calendars for a workday at the Museum on **Tuesday, September 29**, in preparation for Salmon Days.

WASHINGTON NATIVE PLANT SOCIETY

A new “eastside branch program” of WNPS—Central Puget Sound Chapter will join ELWD members in working on the Bellevue Botanical Garden’s Native Discovery Garden, on **October 17**.

The eastside branch will hold a meeting on **September 16, at 7: 30 PM** in Meeting Room #1 of the Redmond Library. (The library is located at 15990 NE 85th Street, Redmond.) The program will be “Plant Propagation on a Shoestring,” by Jeanie Taylor, native plant propagation expert and owner of Taylor Gardens. Ms. Taylor will discuss some simple rules of seed propagation. Beginning with seed collection and processing guidelines, her talk and demonstration will include how to handle different types of fruits and how to extract and clean seeds. She will also provide basic information on seed dormancy, and why knowledge of this is important in the germination of native plant seeds.

Members of ELWD garden clubs have been invited to this meeting. For more information, contact Franja Bryant, franjabryant@hotmail.com.

[Just to let you know...your editor has NO idea where she found the following article, but assumes it was from one of the two newsletters she has permission to copy.]

DIVIDING PERENNIALS

Some perennials are best divided in the fall, others in the spring. The rule of thumb is that spring and summer flowering perennials should be divided in the fall and that fall blooming perennials should be divided in the spring. Many perennials benefit from being divided every 4 to 5 years. Lamb's Ears, bellflowers, and yarrow should be divided more frequently, generally every 2 to 3 years. Others like chrysanthemums should be divided every year, and some plants such as peonies don't need to be divided at all.

September is the recommended month for dividing your spring and summer blooming perennials. Flowering should be complete at this time of the year and after dividing, the plants can put their energy into developing their root systems and leaf growth. Check the weather forecast before dividing your perennials. Cloudy or overcast days are best. Light drizzle is fine too, but avoid days that are expected to be sunny and hot.

There should be a reason to divide perennials as well--unless of course, you're planning on sharing a particular plant with another gardening enthusiast--for instance plants that have become too large for the space they occupy and lack the room for proper growth. In this case, you might see flowers that are smaller than usual. Another good reason to divide perennials is when you notice that the clumps have hollow centers or foliage at the bottom of the plant is dying or yellow meaning that it's probably not getting enough light.

The Gardener's September

"In its way—from the horticultural point of view—September is a gratifying and excellent month; not only because golden rod, autumnal asters, and ... chrysanthemums are in flower; not only because of you, heavy and amazing dahlias; for know ye, unbelievers, that September is the chosen month for everything that flowers a second time: the month of the second flower; the month of the ripening wine. All these are mysterious advantages for the month of September, full of deeper meaning; and, above all, it is the month when the earth opens so that we can plant again! Now those things should go into the ground which must get a hold before the spring...."

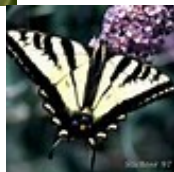
From Karel Capek's The Gardener's Year.
Illustrations by his brother, Josef Capek.



GARDEN DELIGHTS

c/o Cate Mueller, Editor
24205 SE Tiger Mtn Rd
Issaquah, WA 98027-7336

www.IssaquahGardenClub.org



**September Meeting:
Washington Butterflies**